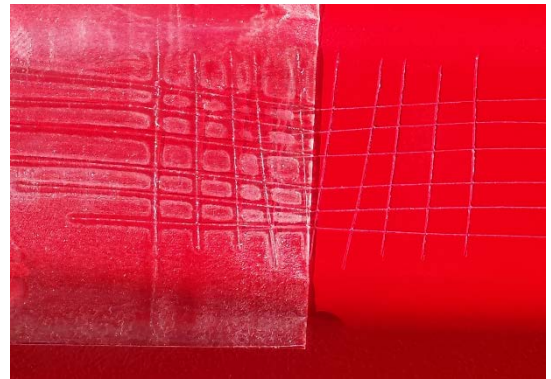


Cross Hatch Adhesion test

Select test area(s) on the surface to be painted. Thoroughly clean this area. With a sharp blade, cut 6 lines vertically and 6 lines horizontally to make a box of 25 squares. The cuts must be deep enough to reach the substrate. Apply 3M #610, #895 or #898 3M Scotch Brand Filament Tape (or similar type of packaging tape) over the scribed area, making certain that the tape is tightly adhered to the test surface. Do not use duct or masking tape.

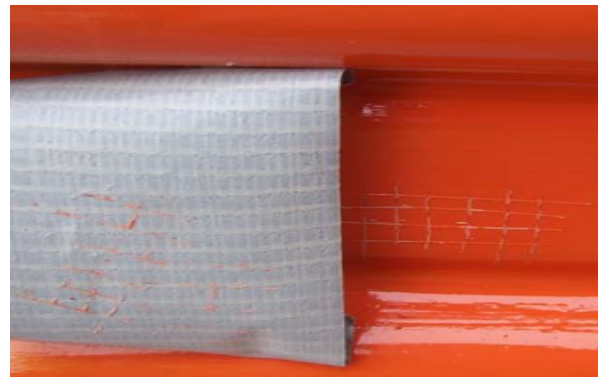
With a steady motion, pull the tape back parallel to the surface. Pulling the tape straight up may not properly pull off bad coating. Examine the test surface. If any square of old coating in the scribed area is removed, if the adhesion has failed. All the failed layers must be removed.



Cross hatch Tape Test Example



Pull Tests with Paint samples that failed.



Pull Tests on Previously Painted Door, looks OK.