

Proper cleaning and abrading of a SMP coated substrate

The process of cleaning SMP coated metal is as follows:

- Pre-rinse the area to be cleaned with power washer
- Spray back and forth across the area you are cleaning
- Keep the nozzle perpendicular to the substrate
- Do not get water behind curtain if pre-rinsing storage doors

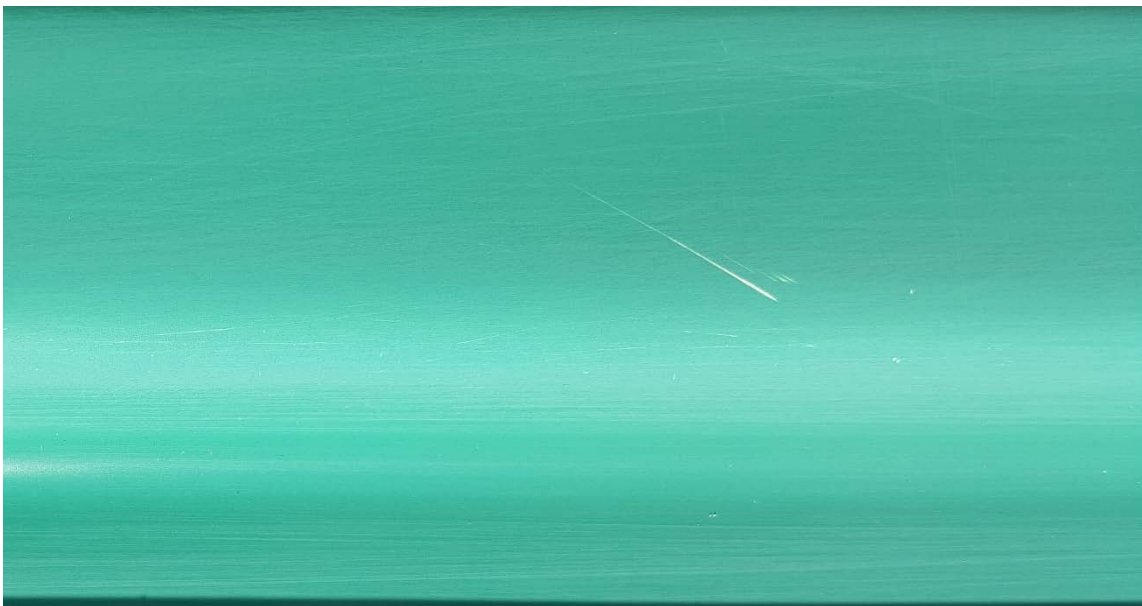
When finished pre-rinsing:

- Apply Sand & Scrub with a Sand & Scrub medium brush & pole
- Vigorously scrub the substrate with the Sand & Scrub filled brush
- Scrub the profile of roll doors and inside corners of areas
- Pay attention to the top, bottom and lock area of roll up doors and the seams
- Use a coarse scotch-brite pad for hard to reach areas

When sufficiently abraded, use the power washer to carefully rinse off all the Sand & Scrub, dirt and any paint residue.

When finished, inspect the area to be sure that SMP was sufficiently scratched and cleaned. If any areas are still glossy, repeat the process until the SMP is clean, dull and scratched.

Remember: the process is not as important as the result, the substrate **MUST** be clean, dull and scratched. Repeat the process until an acceptable profile is obtained.



Properly cleaned and abraded SMP door section